

By using ArchDaily, you agree to our [Terms of Use](#), [Privacy Policy](#) and [Cookie Policy](#).

I ACCEPT

Villa Béa / Veronique Descharrieres + Lionel Leotardi Architecture



Curated by Paula Pintos

Share

HOUSES • TASSIN-LA-DEMI-LUNE, **FRANCE**

Save

By using ArchDaily, you agree to our [Terms of Use](#), [Privacy Policy](#) and [Cookie Policy](#).

I ACCEPT



Structural Engineering Company : [Bucci & Partners](#)

Construction Site Management : [Balmo](#)

Masonry : [Maltez Construction](#)

Roof Cladding : [Leny](#)

MORE SPECS



Text description provided by the architects. Designed by VEDEA - Véronique Descharrières Architecte and LLA Lionel Leotardi Architecture, the Villa Béa is located on a private parcel in the village of [Tassin-la-Demi-Lune](#), near Lyon, France. As a pavilion set in a garden, its integration into the wooded surroundings is accentuated by neighboring historical edifices and impressive centenary trees.

Save

Home

Projects

Products

Folders

Feed

By using ArchDaily, you agree to our [Terms of Use](#), [Privacy Policy](#) and [Cookie Policy](#).

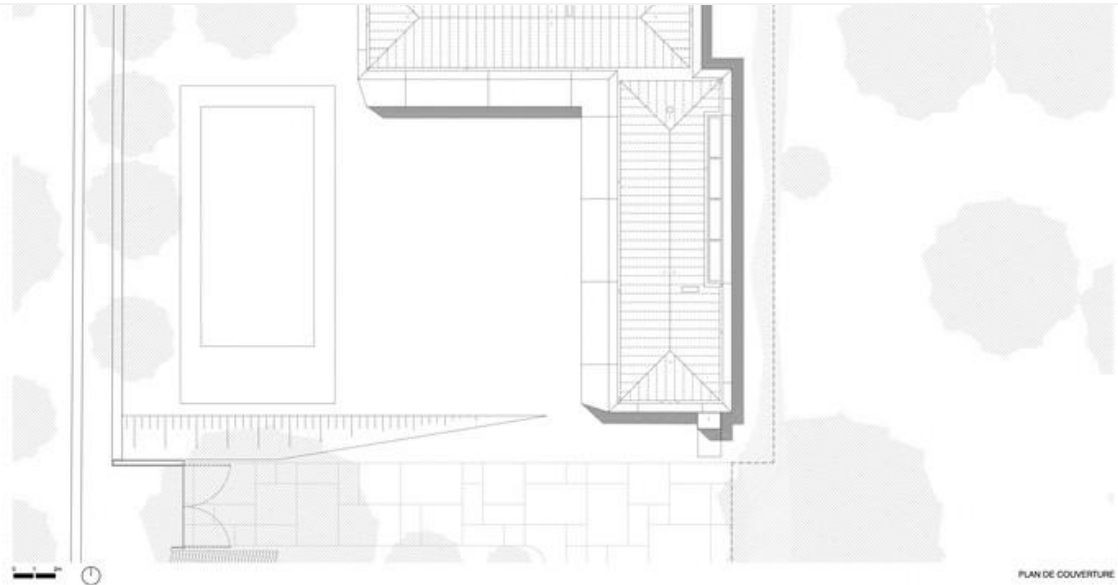
I ACCEPT



Save

By using ArchDaily, you agree to our [Terms of Use](#), [Privacy Policy](#) and [Cookie Policy](#).

I ACCEPT



The adjacent buildings encircling the roughly 3,000 m² sites shield it from having direct access to the public streets and give the parcel a secluded quality. A metal enclosure borders the property limits and prevents direct sight lines to the interior of the site. This allows the new house to take advantage of its intimate setting and open onto the wooded area.

Save

Home

Projects

Products

Folders

Feed

By using ArchDaily, you agree to our [Terms of Use](#), [Privacy Policy](#) and [Cookie Policy](#).

I ACCEPT



Save

Home

Projects

Products

Folders

Feed

By using ArchDaily, you agree to our [Terms of Use](#), [Privacy Policy](#) and [Cookie Policy](#).

I ACCEPT



The Villa Béa consists of adjoining rectangular volumes of 6 m x 16.5 m, organized in an L-shaped configuration. This layout emphasizes the private nature of the house, in addition to reinforcing the concept of creating a house with a singular architectural reading. The project's architectural identity is primarily attributed to its linear thermo-lacquered structural steel framework, which sits on piloti-type foundations in order to prevent damage to the root structures of the surrounding trees.

Save

Home

Projects

Products

Folders

Feed

By using ArchDaily, you agree to our [Terms of Use](#), [Privacy Policy](#) and [Cookie Policy](#).

I ACCEPT



Save

By using ArchDaily, you agree to our [Terms of Use](#), [Privacy Policy](#) and [Cookie Policy](#).

I ACCEPT



The mechanically welded assembly, which serves as a large overhang and shading device, liberates the façade from columns and creates a protected exterior walkway in front of the large glazed surfaces that provide panoramic views of the site.

Save

By using ArchDaily, you agree to our [Terms of Use](#), [Privacy Policy](#) and [Cookie Policy](#).

I ACCEPT



The metallic envelope is coated in a uniform finish that heightens the sculptural dimension of the steel structure. This perception is reinforced via architectural details that conceal joints, mechanical equipment, and lighting fixtures.

Save

By using ArchDaily, you agree to our [Terms of Use](#), [Privacy Policy](#) and [Cookie Policy](#).

I ACCEPT



Primary living spaces such as the main bedroom, living room, and kitchen are located along the glazed façades, with service and secondary zones situated at the back of the house. The drop-ceiling and the floor surfaces incorporate a hydraulic radiant thermal regulation system adapted to the morphology and to the structure of the house and is also hidden in recesses so as to preserve the uniform spatial reading.

Save

Home

Projects

Products

Folders

Feed

By using ArchDaily, you agree to our [Terms of Use](#), [Privacy Policy](#) and [Cookie Policy](#).

I ACCEPT



Recommended Products



Vitrocsa
Minimalist Window - Sliding

Save

By using ArchDaily, you agree to our [Terms of Use](#), [Privacy Policy](#) and [Cookie Policy](#).

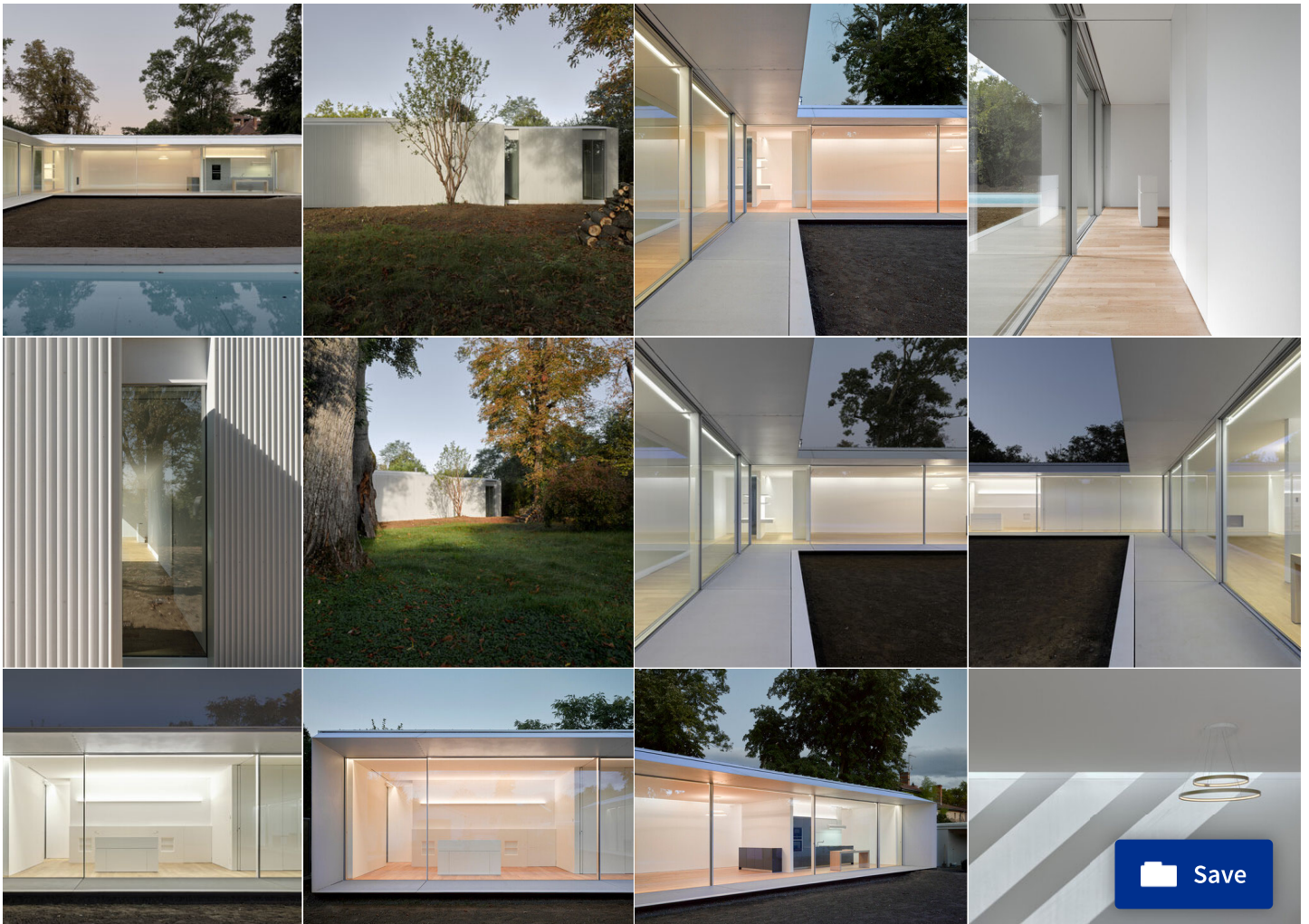
I ACCEPT



OTTOSTUMM | MOGS
Internal Partitions

Dornbracht
Kitchen Fittings - Tara.

Project gallery



Save

Home

Projects

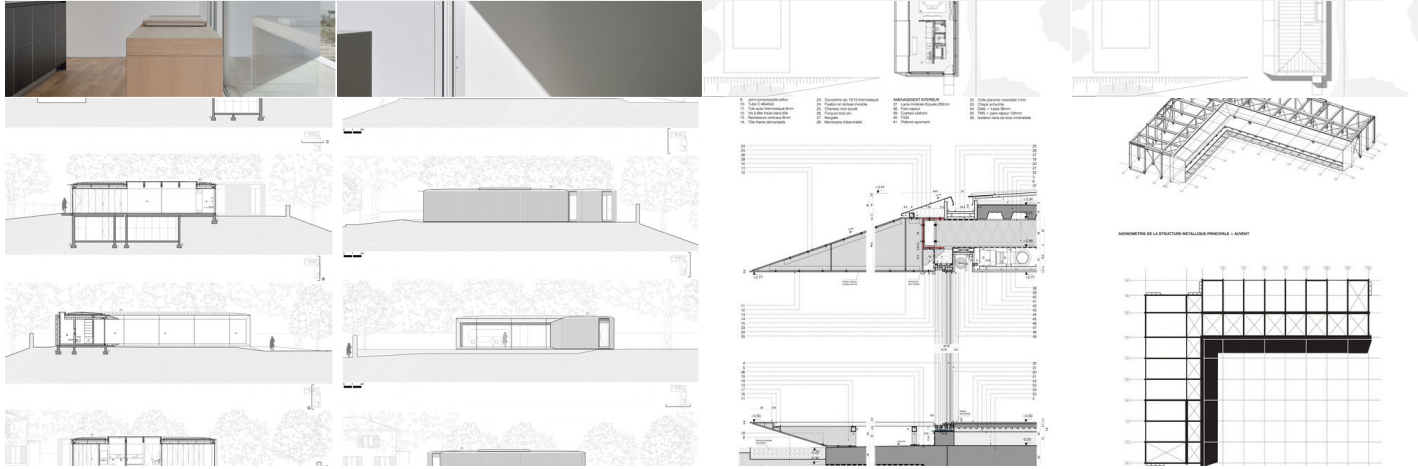
Products

Folders

Feed

By using ArchDaily, you agree to our [Terms of Use](#), [Privacy Policy](#) and [Cookie Policy](#).

I ACCEPT



Share

About this office



Veronique Descharrieres

Office

FOLLOW



Lionel Leotardi Architecture

Office

FOLLOW

MATERIALS

- Glass
- Steel

#TAGS

- Projects
- Built Projects
- Selected Projects
- Residential Architecture
- Houses
- T
- Save

Home

Projects

Products

Folders

Feed